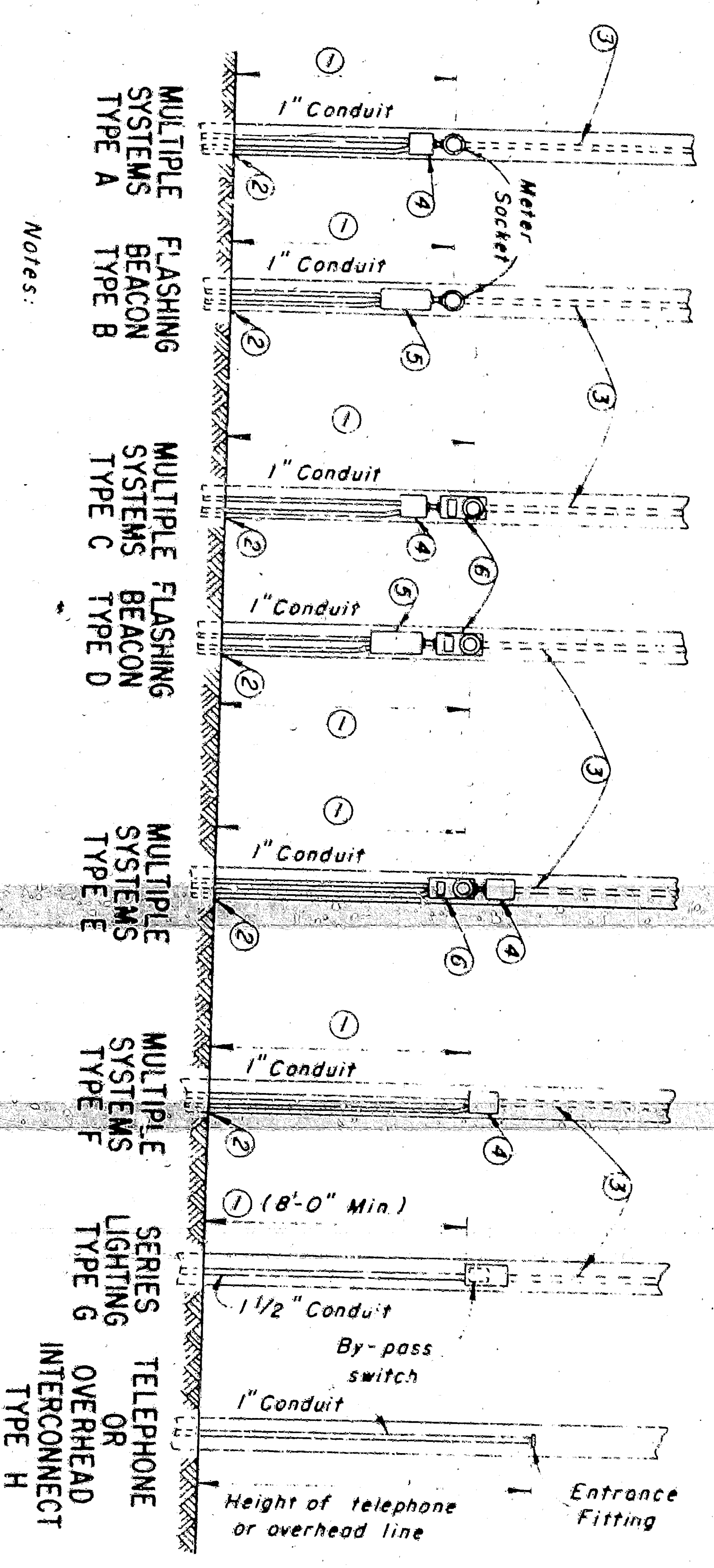


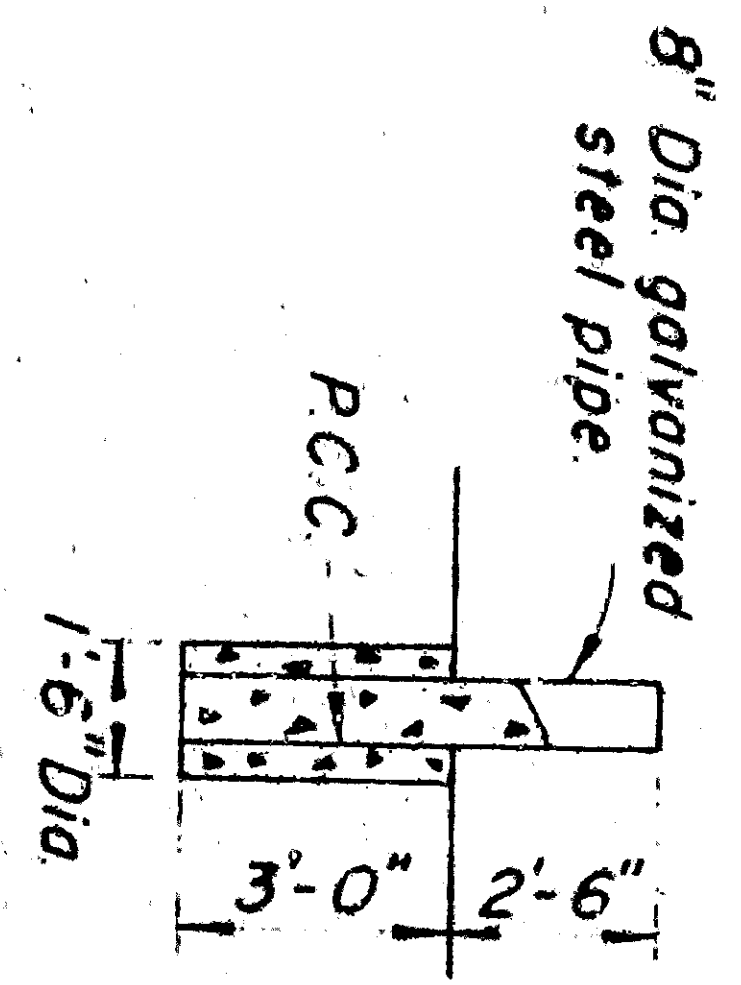
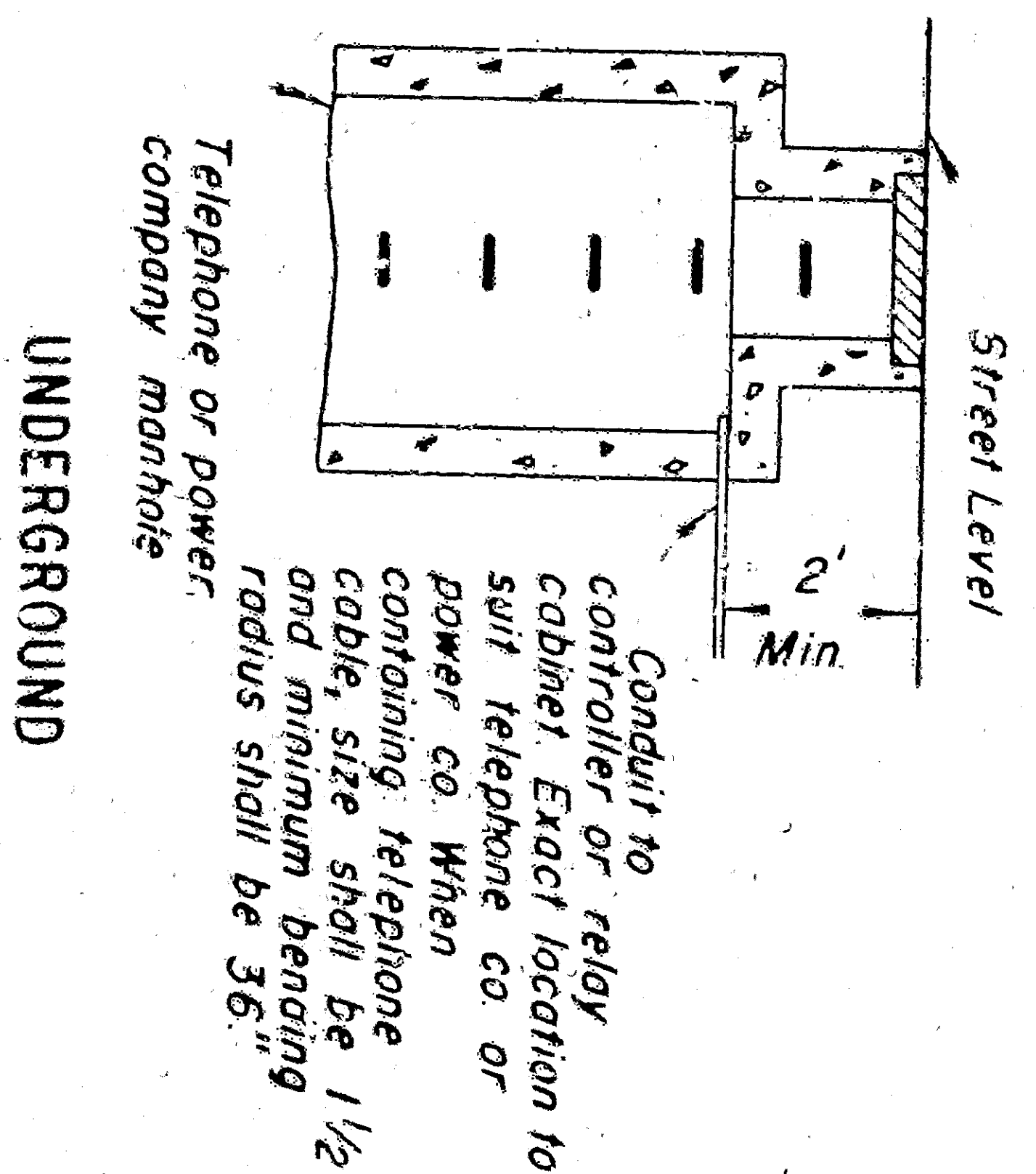
DATE	7	SCALE	AS NOTED
APPROVED	December 1968		
DESIGNED BY	[Signature]		
CHECKED BY	[Signature]		
PROJECT NO.	[Blank]		
DATE	[Blank]		
BY	[Blank]		
FOR	[Blank]		
BY	[Blank]		
FOR	[Blank]		

APPROVED
 December 1968
 [Signature]
 Assistant State Highway Engineer C.E. No. 5989
 TO ACCOMPANY PLANS DATED

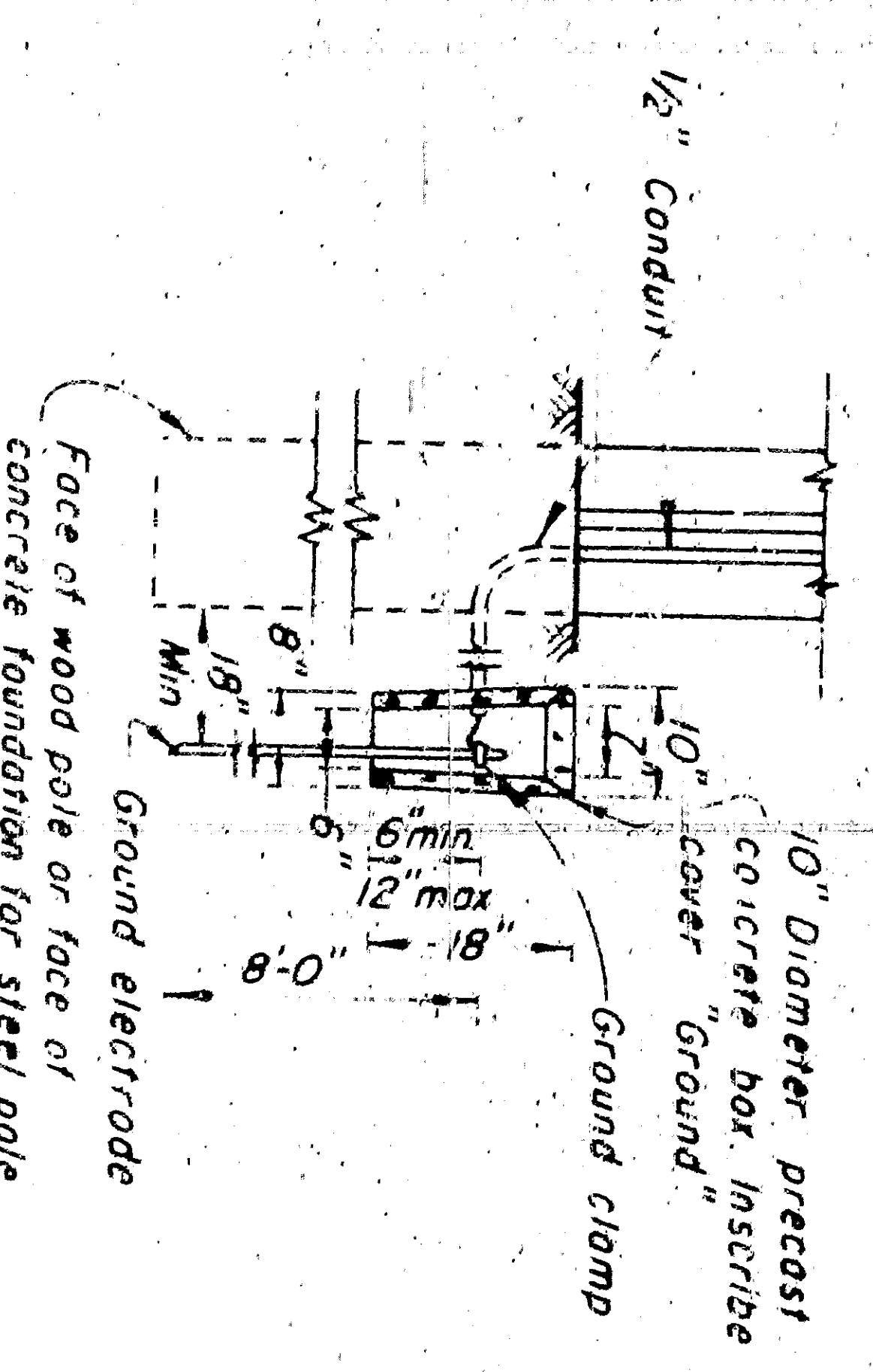
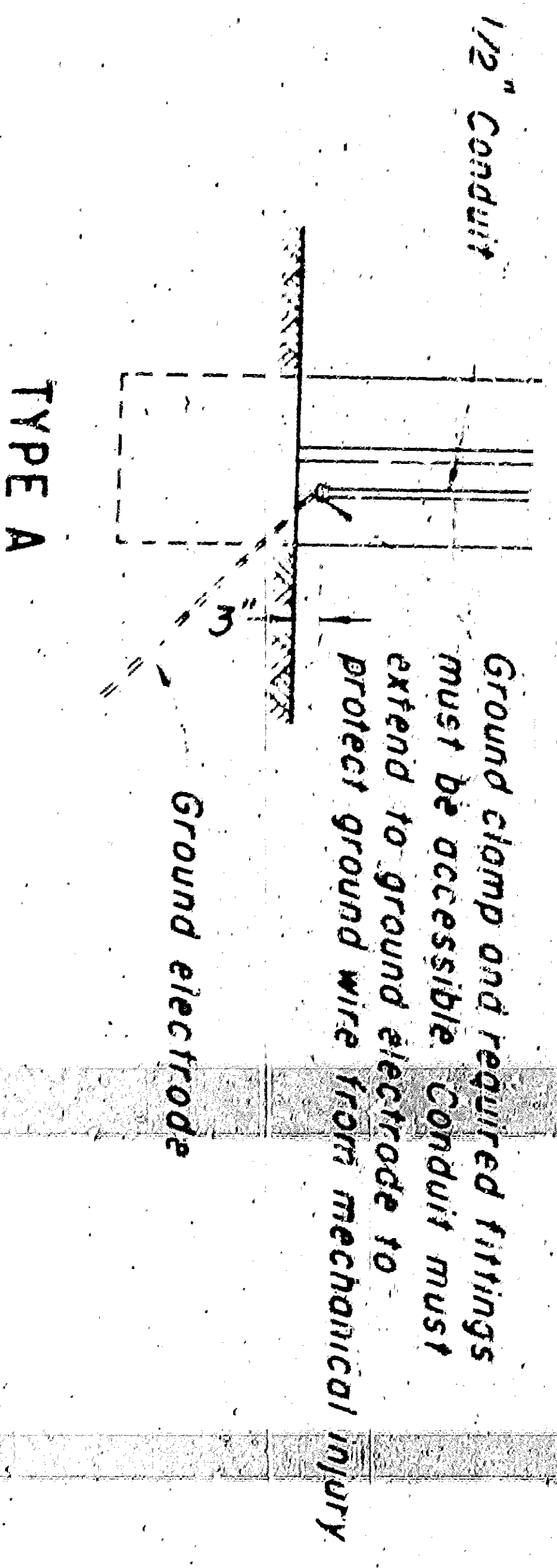


- Notes:
- Position of service equipment to be determined by serving utility.
 - See "Service Grounding" detail.
 - If service pole is utility owned, service riser shall be furnished by contractor and installed by serving utility. On state owned poles, the service riser shall be furnished and installed by contractor. Service riser conduit shall be terminated with a service head or shall be sealed to prevent the entrance of water, as approved by serving utility.
 - Service switch.
 - Flashing beacon control with service switch.
 - Meter socket box with either manual circuit closing device or space for test block as specified.

ELECTRICAL AND TELEPHONE SERVICE DETAILS
 NO SCALE



GUARD POST
 NO SCALE



Notes:
 When water pipe is used for ground, wire shall be enclosed in galvanized rigid conduit, or equivalent mechanical protection.
 Rod or pipe electrodes shall be driven to a depth of at least 8 ft below surrounding grade.

SERVICE GROUNDING
 NO SCALE

Project Engineer	Date
Design Engineer	Date
Approved Recommended By	Date

STATE OF CALIFORNIA
 DEPARTMENT OF PUBLIC WORKS
 DIVISION OF HIGHWAYS
STANDARD DETAILS NO. 1
 TRAFFIC SIGNAL AND
 HIGHWAY LIGHTING
 INSTALLATIONS
 SCALE AS NOTED
 DRAWING NO. E -